

## LOT 161 BURRANGINNIN CLOSE, SALE

### Hawkesbury 200

Bedrooms = 4  
 Living areas = 2  
 Bathrooms = 2  
 Car Space = 2

Width 12.8m / Length 20.56m

Total Square Metres = 233.72m<sup>2</sup>



For illustrative purposes only

### What's Included?

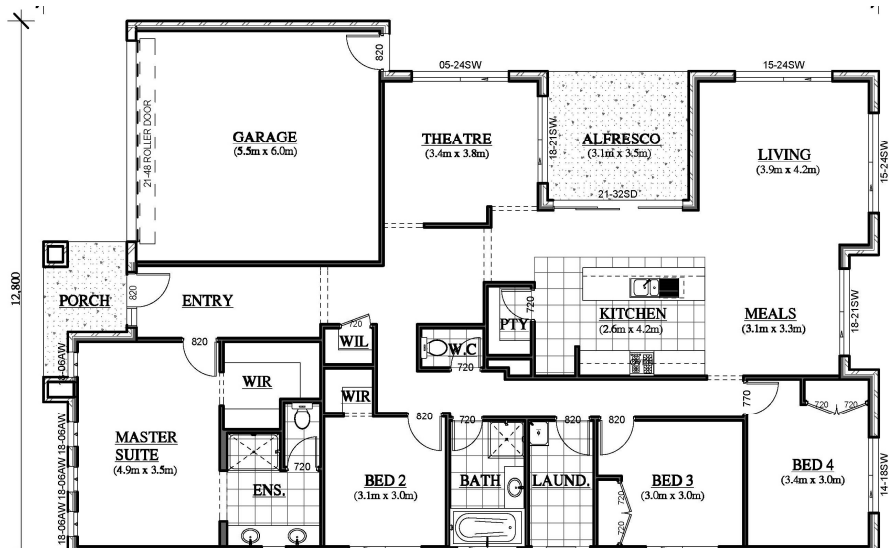
- Driveway 30m<sup>2</sup> plain concrete
- Concrete crossover 15m<sup>2</sup>
- Fully Landscaped
- Window Furnishings
- Back path to Clothesline
- Letterbox and Clothesline
- Floorcoverings
- Gas ducted heating
- 3 coat Dulux Paint system
- B&D Roller door with remote
- Reticulated Termite

#### Treatment

- Flyscreens to all windows
- Solar HWS
- Colorbond Roof
- TV Antennae

....& more!

\* Ask for a full list



## TOTAL OF YOUR PACKAGE

Land Details (Lot No 161, Size 784m<sup>2</sup>):

Lot 161 Burranginnin Close Woodella Estate

Land Price \$ 147,000.00

Colmac Design \$ 232,355.00

**TOTAL Package \$ 379,355.00**



**1300 COLMAC**  
[www.colmachomes.com.au](http://www.colmachomes.com.au)

\* Price is based on the Standard Façade and 'New Start' Inclusions. This price is based on an 'M-Class' Slab, subject to site and soil report, 6-star energy rating, BAL and council requirements. All Photographs are for illustrative purposes only and may not represent standard specifications or inclusions. Colmac Homes reserves the right to alter the images or descriptions without notice. House and Land prices are correct at time of printing and subject to change without notice. Land prices and availability are subject to change without notice.