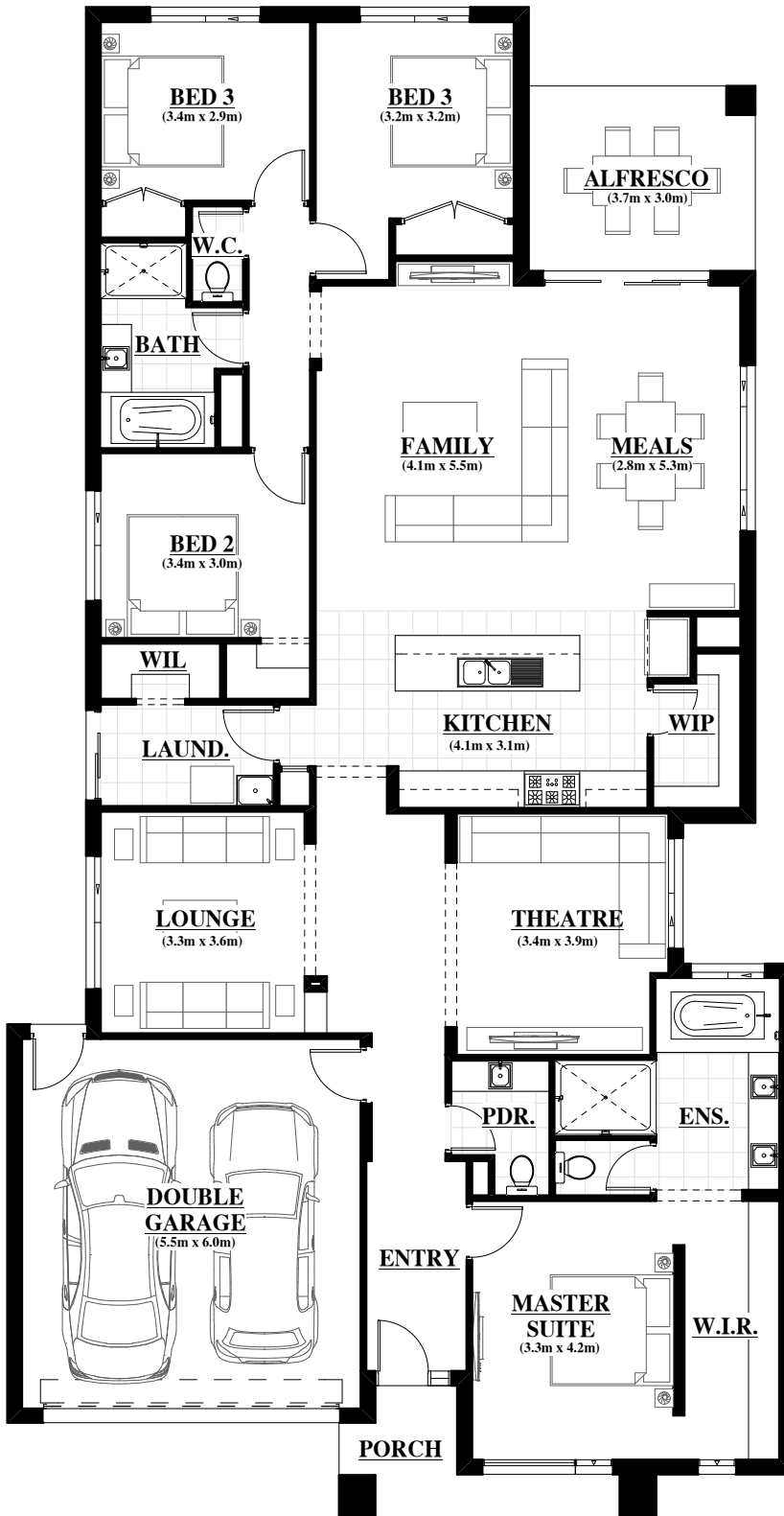


**CROMWELL  
230**

Classic  
Range



|                     |               |
|---------------------|---------------|
| House Width         | <b>12.78</b>  |
| House Length        | <b>24.78</b>  |
| Minimum Block Width | <b>13.98</b>  |
| Dwelling            | <b>211.92</b> |
| Garage              | <b>36.21</b>  |
| Alfresco            | <b>11.04</b>  |
| Porch               | <b>6.12</b>   |
| Total               | <b>265.29</b> |

**Facades Options.**

Auburn, Baldwin, Daintree,  
Grandeur, Quays, Riviera,  
Sierra

